

Expertise  
in metal



 **MECK**

## TRADITION

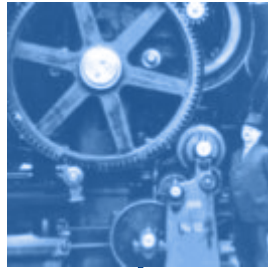
# INNOVATION AND EXPERIENCE SINCE 1851

We stand for expertise in metalworking, from the foundation by master locksmith Ernst Meck in Nuremberg, as a workshop for the construction of cash boxes and safes, until today. From the beginning the wishes and ideas of our customers led our company to innovative production processes and a broad know-how of our staff. As a result we became "royal Bavarian court supplier" and also registered numerous patents for production techniques, Walter Schlenk was also instrumental in the development of the DIN for perforated sheets.

**Metalworking in perfection has always been our ambition and will stay the same.**

### 1851

Ernst Meck starts production of cash boxes and safes



### 1961

Co-development of the "DIN for perforated plates" by Walter Schlenk



### 1899

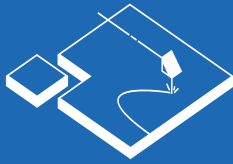
Perforated sheets reach 50% of the production volume



### TODAY

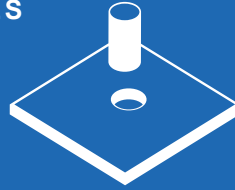
Up-to-date machinery guarantees product quality and adherence to delivery dates

## MANUFACTURING TECHNOLOGIES



### LASER CUTTING

Flatbed and punching laser, fiber laser



### PUNCHING AND PERFORATING

of sheets and coils  
Sheet size: up to 1,700 x 5,000 mm  
Thickness: 0.5 mm to 8 mm



### ROUNDING

Length: up to 2,000 mm  
Thickness: up to 3 mm



### STRAIGHTENING

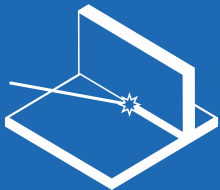
Width: up to 2,000 mm  
Thickness: up to 8 mm



### BENDING

Press beam length: up to 5,020 mm  
Pressing force: 85 to 400 tons

# EXCELLENCE IN METAL PROCESSING



### WELDING



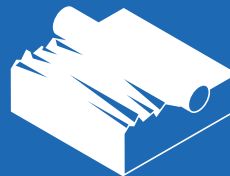
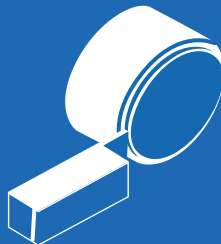
### EMBOSSING

Sheet size: up to 1,250 x 3,000 mm

### LATHING

CNC lathing: Ø max. 300 mm  
Lathing length max. 500 mm

Conventional: Ø max. 300 mm  
Lathing length max. 2000 mm



### FINISHING

### MILLING

CNC milling Process:  
700 to 2000 mm

Width: 800 to 3000mm  
Length: 1000 to 2200 mm



## MANUFACTURING TECHNOLOGIES

# VERTICAL RANGE OF MANUFACTURE AND TOOLMAKING

The core of our production capacities is formed by several wide and strip presses, a fiber laser, a flatbed laser, a punching/laser center, press brakes, welding equipment, a varnishing machine, and toolmaking. The periphery includes equipment for straightening, rounding, folding, embossing, flanging, beading, drilling, and deburring. We use this equipment to process a wide variety of customer requirements with materials ranging from thin sheets to wear-resistant thick sheets. Our experienced team masters the technology and meets high quality requirements on time, day after day, from single pieces to large series.



### Punching and perforating

Our various wide presses, strip presses and patented automatic punching and nibbling machines generate up to 400 tons of force.



*FIBER LASER 2000x 4000 mm*

*Speed and precision - processing even stronger and more diverse materials (Trumpf TruLaser 3040 fiber)*

*Source: Trumpf*



### Laser cutting

Our fully automated flatbed laser from Trumpf precisely cuts complex contours. Even with heavy sheet metal, the cut quality is very good.

Our new TruLaser 3040 fiber enables processing of aluminum (up to 25 mm), stainless steel (up to 25 mm or 35 mm on request), Hardox (up to 25 mm), copper (up to 10 mm), brass (up to 10 mm), steel (up to 25 mm or 32 mm on request), among others.

Sheet size: max. 2,000 x 4,000 mm

With combined punching-laser systems from Trumpf, we cut steel sheets and non-ferrous metals and alloys with the highest precision and at high speed.

Sheet size: max. 1,700 mm x 5,000 mm;  
thickness: max. 8 mm

## MANUFACTURING TECHNOLOGIES



*PRESS BRAKE MACHINE 400 tons to 5 m, precision bending machine, as used in shipbuilding, with angle sensor and automatic bending aid (Amada HFE 3i 4005L) Source: Amada*



### Milling

Our CNC milling machines allow travels from 700 to 2000 mm. Milling width from 800 to max. 3000 mm as well as milling length from 1000 to max. 2200 mm are feasible.



### Bending

We have several hydraulic presses, including the Amada HFE 3i 4005L, with angle sensor technology for precise bending of sheets for machine panelling, control cabinets, housing or machine components. According to customer specifications, smaller bending angles or complicated profiles are also produced in several work steps.



### Straightening

We use modern roller straightening machines with high precision, which straighten almost stainless even difficult flame-cut parts within a few minutes.



### Lathing

We offer CNC lathing with a lathing diameter of max. 300 mm and a lathing length of max. 500 mm. We are also happy to offer conventional lathing with a lathing diameter of max. 150 mm and a lathing length of max. 2000 mm.



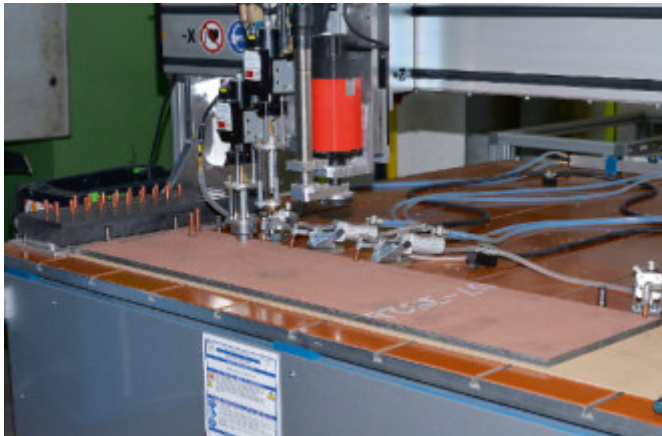
## MANUFACTURING TECHNOLOGIES

### Embossing

When using our strip press, the embossing of sheets is carried out precisely in one continuous step.

### Welding

Our welding techniques offer a wide range of processing possibilities: Laser, oxyacetylene and spot welding, MIG, MAG, TIG, as well as automated stud welding. Ten combinable welding tables cover all practical sizes. Standard or project-specific fixtures permanently ensure the highest fitting accuracy.



*AUTOMATIC BOLT WELDING SYSTEM Working range of XY - 1050 mm x 1500 mm enables precise, fully automatic welding of studs and pins of  $\varnothing$  3 - 10 mm and 40 mm length*



*ROUNDING MASCHINE*



*INSERTATION PRESS*

*force max. 53kN for bolts, nuts, bushings from M2 to M10 (Haeger 618MSPe) Source: Haeger*



### Rounding

With several rounding machines we produce conical roundings, complete rings, transitions, partial roundings, or also half shells from stainless steel up to a thickness of 3 mm and a length of 2,000 mm.



### Finishing

We enhance a large part of our products with various processes. In this way, we protect the material from moisture, heat, special industrial requirements, or impact and abrasion. We almost always find an effective solution, no matter which stress our parts are exposed to in the course of their life. But we also efficiently stage design-oriented effects such as three-dimensionality or reflections by choosing the right processes. We refine surfaces via powder coatings, galvanizing, electropolishing, etching, anodizing, KTL coatings, Rilsan coatings, glass bead blasting, painting, and printing. We will be happy to advise you on the selection of the right process.

## MANUFACTURING



### Manufacturing Technologies

- Pickling
- Scribing
- Notching
- Aligning
- Drilling
- Bolts and blind rivets
- Digital printing, screen and pad printing
- Insertation of nuts, bolts, bushing
- Degreasing
- Deburring
- Milling
- Thread cutting
- Bending
- Laser cutting
- Assembly of component groups
- Nibbling
- Riveting
- Spot Welding
- Straightening
- Rounding
- Sawing
- Grinding
- Locksmithery
- Cutting
- MIG/MAG/TIG and stud welding
- Countersinking
- Filling and grinding
- Punching
- Compound rolling
- Finishing
- Rolling
- Toolmaking



### Development / Construction

- Solid Works
- Inventor CRM TruTops
- TruTops Boost



### Machinery

- Fiber laser machine Trumpf 4000x2000
- Laser machine Trumpf 4000x2000
- Amada bending machine 400T 5m
- 2x Trumpf press brake 85T-200T 4m
- Wide press 400T max.500 stroke coil to 1500
- 3x High speed presses
- Skewer press 200T
- 3x Milling machine
- 3x Punch / laser combination machine  
Trumpf Trumatik incl. thread cutting
- CNC stud welding machine
- CNC automatic lathes
- 4x Straightening machines
- 3x Rounding machines
- 2x Grinding machines
- Cup grinding machines
- 2x Band saw
- Varnishing machine
- Guillotine shear
- Spot welding machine
- Insertation press
- Rotary Brush Machine
- Notching machine



## SERVICES

# EVERYTHING FROM A SINGLE SOURCE

We are specialists in fashioning and processing of metal with decades of experience in numerous industries, from architecture to mechanical engineering to medical technology. For years we have been certified according to ISO 9001, ensure quality by process-safe measurements and project control up to documentation. We serve customers and projects of all sizes and requirements, from regional craftsmen to international corporations. Our goal is always to find the best economic and qualitative solution.

As a system supplier you can hand over your project to us. We advise, design and manufacture from individual pieces to series, exactly, precisely, and as a reliable part of your value chain.





## SERVICES

### **System solutions: the most important currency**

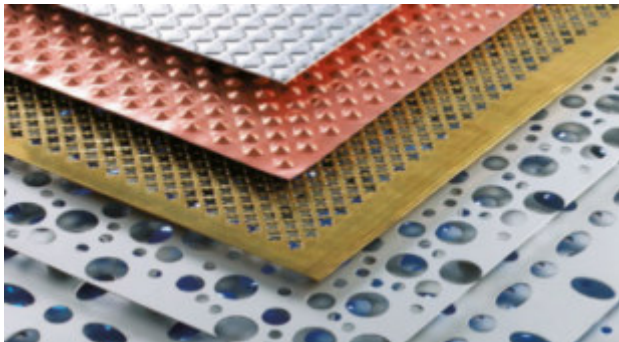
As system supplier, we participate in your process chain, from development to series production. We manufacture assembly groups exactly when they are needed, "on demand".

We value the partnership-based cooperation in which we can contribute our manufacturing know-how.

You minimize your ordering costs as you can bundle ordering processes. In addition, our delivery reliability minimizes the risk of tied-up capital for you because you can reliably assemble all parts and do not have to keep any components in stock.

### **Construction and implementation of assemblies**

One of our focal points is the production of sheet panning for machine and plant construction. Here we produce entire assemblies premounted on assembly wagons. For the individual product we use an intelligent system control for customized shaping, which offers us a strict orientation to the customer's needs.



### **Material, processing and finishing**

We process materials such as steel, strip galvanized steel sheet, stainless steel, alloy steels, aluminum, and non-ferrous metals such as copper. With our CNC-controlled machinery, we can efficiently manufacture components of the highest quality. We enhance a large part of our products with various processes.

## INDUSTRIES

# YOU WILL ENCOUNTER OUR PRODUCTS EVERYWHERE

We offer solutions in sheet metal processing for numerous industries from architecture to the recycling industry. As a skilled partner, we support you from the planning phase through project planning and the entire project duration or the implementation of a series. Our claim is a reliable, economical and error-free implementation.

With us, you can keep an eye on the big picture: Whether in industry, as an architectural eye-catcher, in medical technology, in the sports world, or cleverly used in everyday life. With the help of our advice, you will find the perfect solution for your needs!



 **ARCHITECTURE**



 **CONSTRUCTION  
AND AGRICULTURAL  
MACHINERY**



 **AUTOMOTIVE INDUSTRY**

**INDUSTRIES**



 **FILTER**



 **MECHANICAL  
ENGINEERING**



 **RECYCLING**



 **MEDICAL  
TECHNOLOGY**

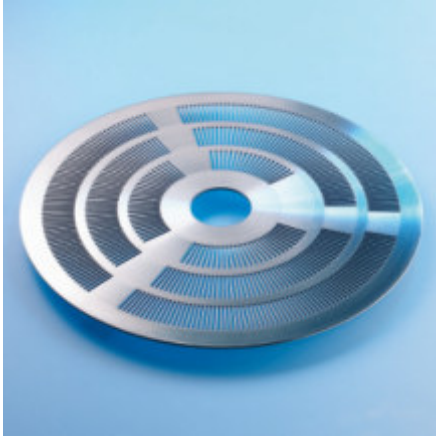


 **FURNITURE INDUSTRY**



 **FOOD INDUSTRY**

## MANUFACTURING EXAMPLES



**GRINDING TECHNOLOGY**



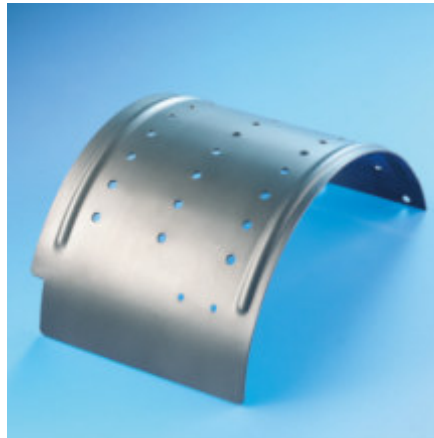
**CLEANING OF SMALL  
OBJECTS**



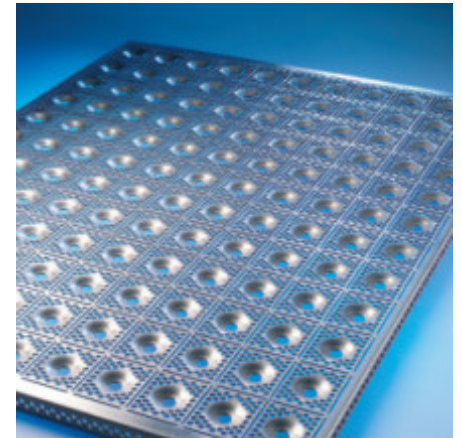
**FILTERING TECHNOLOGY**



**MEDICAL TECHNOLOGY**



**MECHANICAL ENGINEERING**



**AGRICULTURAL MACHINERY**



## MANUFACTURING EXAMPLES



**ROAD CONSTRUCTION  
MACHINERY**



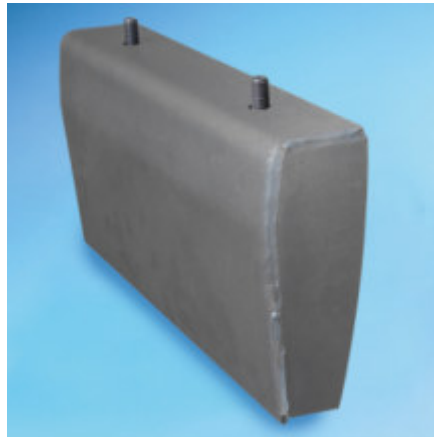
**PLANT ENGINEERING**



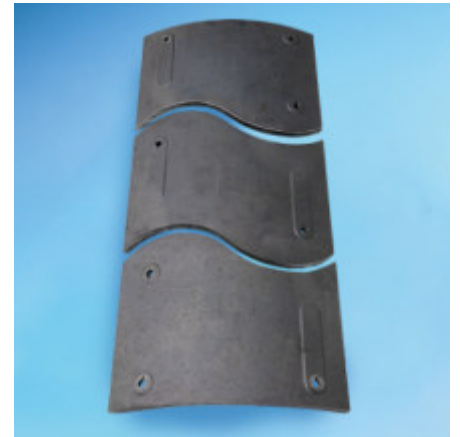
**ARCHITECTURE**



**PLANT ENGINEERING /  
RECYCLING**



**PLANT ENGINEERING**



**PLANT ENGINEERING**



MECK - A MEMBER OF THE  
FINK GROUP.



FINK GROUP



FINK

Spare and wear parts for  
road construction machinery



MECK  
Expertise in metal



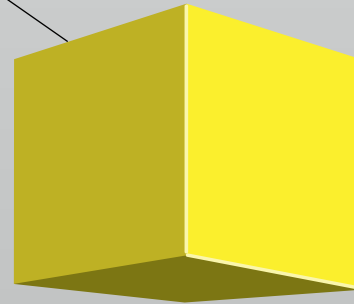
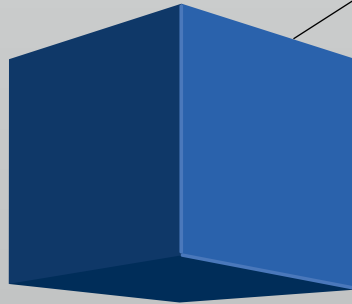
# FINKGROUP

Sales companies in  
**Russia, Turkey and Germany**



**MECK**  
Expertise in metal

**FINK**  
Spare and wear parts for  
road construction machinery



## Fink Group

The Fink Group rests on two pillars - the Baumaschinen Fink GmbH with sales companies in Russia, Turkey and Norbert Fink GmbH in Nuremberg, as well as Ernst Meck GmbH. All companies are managed by the brothers Alexander Fink and Daniel Fink.

## Ernst Meck

Founded in 1851 as a manufacturer of sophisticated metal goods, Ernst Meck today has the complete vertical range of manufacture for the production of perforated plates, sheet metal cladding and spare and wear parts for road construction machinery.

## Baumaschinen Fink

Since 1977, Fink Road Construction Machinery has been manufacturing spare parts, repair kits and wear parts of the highest quality for Vögele, Volvo, Dynapac and Bomag road pavers and distributing them worldwide.



*Headquarters Fink Group, Schnaittach bei Nürnberg*

**You will find Ernst Meck GmbH in the middle of Nuremberg, directly at Frankenschnellweg (A73).**

**Ernst Meck GmbH**

Lochbleche und Blechverarbeitung

Fuggerstraße 16, 90439 Nuremberg

Tel: +49 911 270 65 - 0

Fax: +49 911 270 65 - 50

E-Mail: [info@ernst-meck.de](mailto:info@ernst-meck.de)

Web: [ernst-meck.de](http://ernst-meck.de)

